



INTERNATIONAL EDITION

# MONOLITHIC MEMBRANE 6125<sup>®</sup>

## RAISING THE GLOBAL STANDARD

THE FIRST AND ORIGINAL RUBBERIZED ASPHALT



BUILDING TRUST





## GLOBAL EXPERIENCE

Hydrotech's Monolithic Membrane 6125®, the original rubberized asphalt membrane, has been entrusted for 50 years with keeping high profile structures around the globe watertight. With more than two billion square feet of MM6125® installed on projects in over 36 countries, the product is supported by an extensive network of agents and installers.

## MONOLITHIC MEMBRANE 6125® PERFORMANCE

**Thermoplastic Material** - one component, 100% solids, no solvent, no VOC, no cure time. A monolithic high performance membrane applied with no seams or laps. Fully bonded to the deck, which restricts lateral water movement between the deck and membrane.

**Dead Level Application** - perfect solution for flat roofing. No slope is required for draining and it can withstand submersed water conditions continuously, making it the perfect membrane for flat roofs, water features, pools and green roofs.

**Sustainable Product** - MM6125®EV can be formulated with up to 25% post-consumer recycled content. Other tenets of sustainability include: in-field product longevity, recycled packaging, encapsulated melttable film wrap, long shelf life and lower heating temperature and energy consumption - reducing the product's carbon footprint impact on the planet.

**Superior Formulation** - MM6125 is manufactured in a certified ISO 9001:2000 facility and carries worldwide approvals such as CE Mark (European Technical Approval ETA-05/0152), REACH compliant, China Product Approval (Jin Chai), Poland Product Approval (ITB) and Underwriter's Laboratories Canada (ULC). The membrane can also contribute toward LEED points on a project. MM6125EV is formulated with inert clay fillers making it resistant to acids (fertilizers, building washes, acid rain, etc.), alkali, methane and numerous waste.

**Adhesion/Cohesive Strength** - toughness and tenacity ratio means excellent adhesion to substrate and cohesive strength. Superb elongation and low temperature flexibility ensure the membrane does not become brittle.

**Cold Weather Applications** - can be applied to 0°F (-18°C) and is unaffected by rain or snow conditions immediately after installation.



The Gate DFC, Dubai - United Arab Emirates



Shanghai Grand Theatre, Shanghai - China



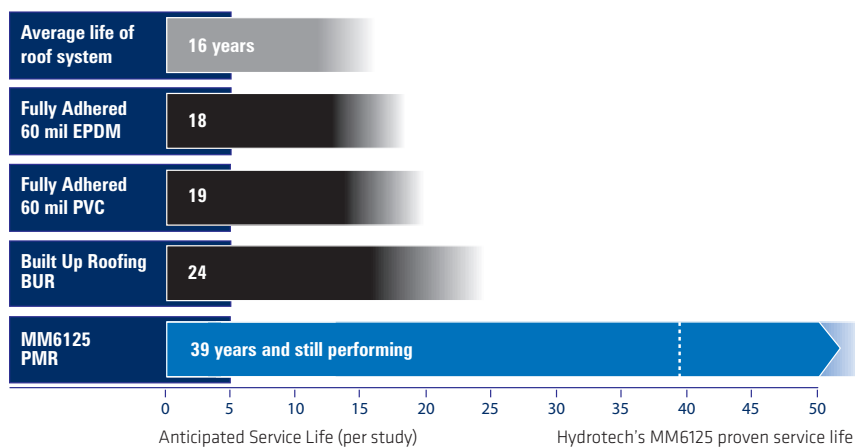
Royal Bank of Scotland, Edinburgh - Scotland

## LIFE CYCLE BENEFIT

Monolithic Membrane 6125 in a protected assembly maximizes the lifecycle benefit to an owner well beyond other options. Compare for yourself and see the clear difference.

Costs that must be considered are: Initial Cost, Maintenance / Repair and Replacement Cost. MM6125EV is more economical to install, lasts longer and has earned the BBA's highest rating, the BBA Agrément Approval from the United Kingdom as **"an effective barrier to the transmission of water... for the design life of the roof structure."**

- Agrément No. 90/2431 & 90/2432.



Ask to see the SmithGroup Life Cycle Cost study commissioned by Dow Chemical.

**MM6125, the waterproofing of choice when quality is a requirement, not an option.**

## TYPICAL APPLICATIONS



Taishin Bank Tower, Taipei - Taiwan



US Embassy, Abidjan - Ivory Coast



Lei Yue Mun Project, Hong Kong - China

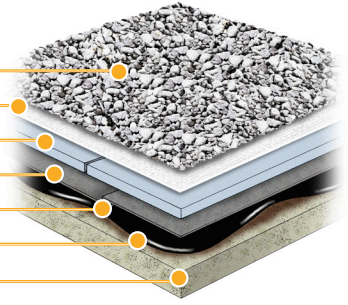
### Additional Products

- Hydrodrain® Drainage Composites
- Gardendrain® Garden Roof® Components
- Hydrotech Architectural and Ballast Pavers
- STYROFOAM® Insulation
- LM6090 and MM7800 Cold-Applied Membrane Products
- VM75 Vertical Sheet Membrane Products

### Protected Membrane Roof

- Stone Ballast
- Stone Filter Fabric
- STYROFOAM®
- Hydroflex®
- Monolithic Membrane 6125® (5.5 mm)
- Surface Conditioner
- Approved Substrate

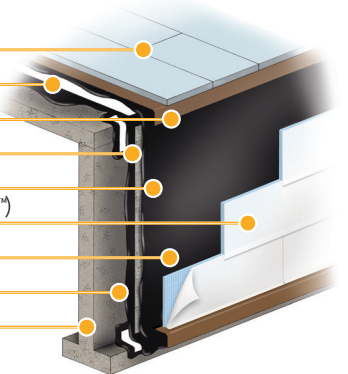
(typical components depicted)



### Vertical Waterproofing

- STYROFOAM®
- Monolithic Membrane 6125® (5.5 mm)
- Hydroflex®
- Flex Flash F
- Flex Flash FV
- STYROFOAM® (board, fanfold or Thermaflo®)
- Monolithic Membrane 6125® (5.5 mm)
- Surface Conditioner
- Approved Substrate

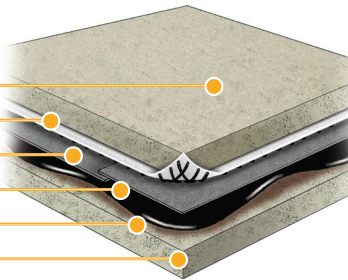
(typical components depicted)



### Split Slab Construction

- Concrete Topping Slab
- Hydrodrain® 300
- Hydroflex®
- Monolithic Membrane 6125® (5.5 mm)
- Surface Conditioner
- Approved Substrate

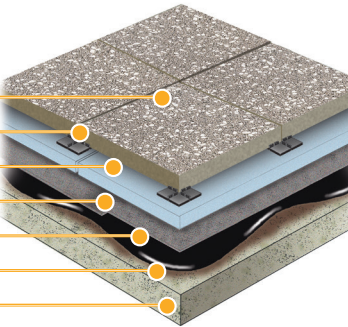
(typical components depicted)



### Ultimate Assembly®

- Architectural Pavers
- Tabs
- STYROFOAM®
- Hydroflex®
- Monolithic Membrane 6125® (5.5 mm)
- Surface Conditioner
- Approved Substrate

(typical components depicted)

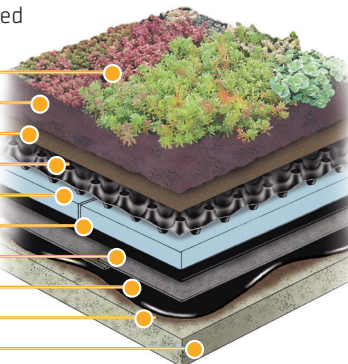


### Garden Roof® (Extensive, Intensive or Semi-Intensive)

Extensive vegetation and components depicted

- Vegetation
- LiteTop® Growing Media
- Systemfilter
- Gardendrain® GR15® / GR30® / GR50®
- STYROFOAM® (optional)
- Root Stop
- Hydroflex®
- Monolithic Membrane 6125®EV (5.5 mm)
- Surface Conditioner
- Approved Substrate

(typical components depicted)



\* For additional Hydrotech ballasting options, including architectural pavers, please contact us





Złote Tarasy, Warsaw - Poland



The Ritz-Carlton, Grand Cayman



NBO Chancery, Berlin - Germany



International Airport, Abu Dhabi - United Arab Emirates

In 1980, American Hydrotech, Inc. purchased the Construction Products Division of Uniroyal Ltd. in Canada, giving the company exclusive worldwide ownership for the manufacture and distribution of Monolithic Membrane 6125®.

One early strength of American Hydrotech, Inc., that continues today, is its established relationships with the architectural community. The highly respected architectural firm Skidmore, Owings and Merrill first used MM6125® in the late 1960's for the Finance and Management Center at the Illinois Institute of Technology in Chicago. Since that time, SOM and countless other design firms have counted on MM6125® and other Hydrotech products to help keep some of the world's most recognized structures watertight.

Continuing the history of innovation, in 1997 Hydrotech introduced the Garden Roof® Assembly, to transform underutilized roofs, podium decks, and plazas into landscaped and recreational environments. This was the first single source green roof assembly (everything from the deck up) in the United States. Since then, Hydrotech has provided various green solutions on roofs of over 10,000 projects.

In 2021, Sika Corporation acquired American Hydrotech for its position as the market leader in the development and production of premium waterproofing and roofing products and assemblies. With more than 100 years of experience, Sika is a worldwide innovation and sustainability leader in the development and production of systems and products for commercial and residential construction, as well as the marine, automotive, and renewable energy manufacturing industries.

Sika has offices in over 103 countries with over 400 manufacturing facilities and more than 33,000 employees worldwide. With annual sales of 12 billion dollars in 2023, our commitment to quality, innovation, and the environment as well as putting our customer's needs first, encompasses why Sika is the global leader in our industries. Sika, beyond the expected.

Cover Photo – Ontario Tower, New Providence Wharf, London – UK

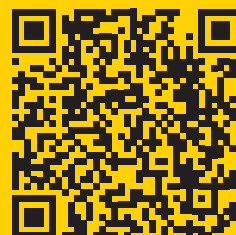
## WE ARE SIKA

With more than 100 years of experience, Sika is a worldwide innovation and sustainability leader in the development and production of systems and products for commercial and residential construction, as well as the transportation, marine, automotive, and renewable energy manufacturing industries.

Sika has subsidiaries in 102 countries around the world and, in over 400 factories, produces innovative technologies for customers worldwide. In doing so, it plays a crucial role in the transformation of the construction and transportation sector toward greater environmental compatibility. With more than 34,000 employees, the company generated sales of CHF 11.76 billion in 2024.

Our most current General Sales Conditions shall apply. Please consult the most current local Product Data Sheet prior to use.

© Sika Corporation / INT.1 / 8/2025



## SIKA CORPORATION • ROOFING & WATERPROOFING

100 Dan Road • Canton, MA 02021 • USA

800.509.3350 800.877.6125

[usa.sika.com/roofing](http://usa.sika.com/roofing) • [hydrotechusa.com](http://hydrotechusa.com)

**BUILDING TRUST**

